



INDUSTRIAL BRAKE RELINERS

(303) 424-9037

Your Source for Medium to Heavy Duty Brake Parts

BRAKE PADS / BRAKE SHOES / CALIPERS / ROTORS / DRUMS / SEALS / BEARINGS / WHEEL CYLINDERS / MASTER CYLINDERS

Workhorse

Year (s)	Front Pads	Front Rotor	Hardware Kit	Front Caliper	Rear Pads	Rear Rotor	Hardware Kit	Rear Caliper
2005-2007	66mm Piston Dia. CFD-786 52mm Piston Dia. CFD-1268 68mm Piston Dia. CFD-1027	5 Hole Rotor TBA 8 Hole Rotor 120.85000 10 Hole Rotor 120.85001	66mm Piston Dia. 117.83001 52mm Piston Dia. 117.85001 68mm Piston Dia. 117.85002	Cast # 4153269 141.83003 Cast # 2x52/28 10K GVW L 141.85002 R 141.85001 Cast # 5662.02 14.5 GVW L 141.85004 R 141.85003	66mm Piston Dia. CFD-786 52mm Piston Dia. CFD-1268 68mm Piston Dia. CFD-1027	5 Hole Rotor 120.85002 8 Hole Rotor TBA 10 Hole Rotor 120.85003	66mm Piston Dia. 117.83001 52mm Piston Dia. 117.85001 68mm Piston Dia. 117.85002	Cast # 2x52/28 10K GVW L 141.85504 R 141.85503 Cast # 5662.02 14.5 GVW L 141.85502 R 141.85501



141.85001
Bore: 52mm
Bleeder: 10x1mm
Port: 10x1mm
Pad: 10x.12680
Loc: Front
Pos: Leading
Brkt Cst: 929400
C# 929300



141.85002
Bore: 52mm
Bleeder: 10x1mm
Port: 10x1mm
Pad: 10x.12680
Loc: Front
Pos: Leading
C# 929305



141.85003
Bore: 68mm
Bleeder: 12x1mm
Port: 12x1mm
Pad: 10x.10270
Loc: Front
Pos: Leading
Brkt Cst: 5663.01
C# 566101



141.85004
Bore: 68mm
Bleeder: 12x1mm
Port: 12x1mm
Pad: 10x.10270
Loc: Front
Pos: Leading
C# 5662.02



141.85501
Bore: 68mm
Bleeder: 12x1mm
Port: 12x1mm
Pad: 10x.10270
Loc: Front
Pos: Leading
Brkt Cst: 5663.01
C# 566101



141.85502
Bore: 68mm
Bleeder: 12x1mm
Port: 12x1mm
Pad: 10x.10270
Loc: Front
Pos: Leading
C# 5662.02

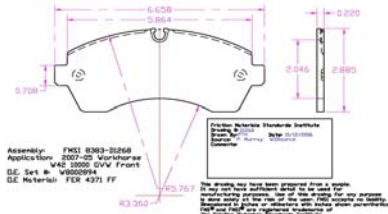
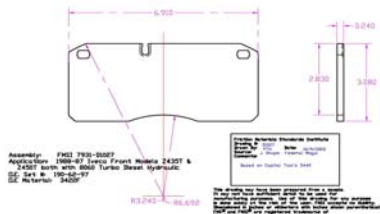
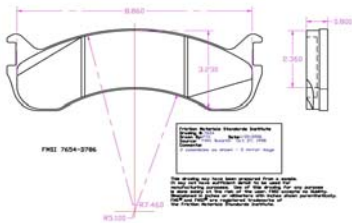


141.85504
Bore: 52mm
Bleeder: 10x1mm
Port: 10x1mm
Pad: 10x.12680
Loc: Rear
Pos: Trailing
C# 929400



141.83003
Bore: 66mm
Bleeder: 7/16-24
Port: 7/16-24
Pad: 10x.07860
Loc: Front/Rear
Pos: Leading/Trailing
C# 4153269

ROTOR ILLUSTRATIONS



INDUSTRIAL BRAKE RELINERS 6125 W. 59TH AVE. ARVADA, CO. 80003